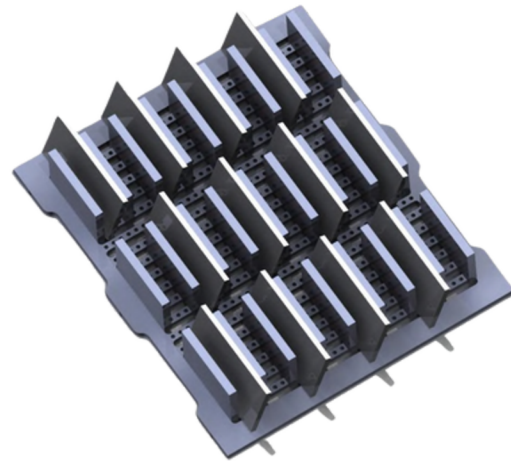




DUT shelves are made of Delrin or similar to prevent reflection and scratching of DUTs. Grid design allows for placement customization and expandable setup options. Shelf Design and track allow for 3/4 pull-out and stop for easier loading, and prevent straight pull out.

Slotted design allows for Maximum Air-Flow through DUTs. Slots can also provide cable routing solutions.



Shelves are removable for easy set-up outside of the enclosure.

Easily slides in and out for convenience