

TC-5932AU

Shield Box

Data Sheet





TC-5932AU



TC-5932AU Rack Mount Set

Introduction

For those looking to test larger wireless devices like laptops and desktops, the TC-5932AU provides up to 12 GHz of RF shielding in a rack-mountable setting similar to that of the TC-5932AU. Our wide-frequency band ensures that our box can be applied to traditional technologies like LTE, Bluetooth, and Zigbee, as well as on forward-looking wireless communication technologies like 5G, WIFI 6E, and UWB variants.

Features

Reliable high RF shielding from 0.1 GHz to 12 GHz

Easy open/close

Absorbing materials for stable measurement results

EMI filters on all data lines

Customizable I/O interface panels

TC-5392AU Rack Mount Set: TC-5932AU [1EA] + 19" Rack Mounting Bracket

Mechanical Specifications

■ TC-5932AU

Dimensions	
Inside	369 (W) x 320 (D) x 238 (H) mm
Outside	416 (W) x 400 (D) x 293 (H) mm
Door	339 (W) x 236 (H) mm

Weight	Approx. 15 kg
--------	---------------

*Packing	
Size	680 (W) x 640 (D) x 440 (H) mm
Weight	Approx. 20 kg

■ TC-5932AU (19" Rack Mount Set)

Dimensions	
Inside	369 (W) x 320 (D) x 238 (H) mm
Outside	483 (W) x 488 (D) x 310 (H) mm
Door	339 (W) x 236 (H) mm

Weight	Approx. 22 kg
--------	---------------

*Packing	
Size	680 (W) x 640 (D) x 440 (H) mm
Weight	Approx. 27 kg

* The size or weight of a package may vary depending on how the product is packed.

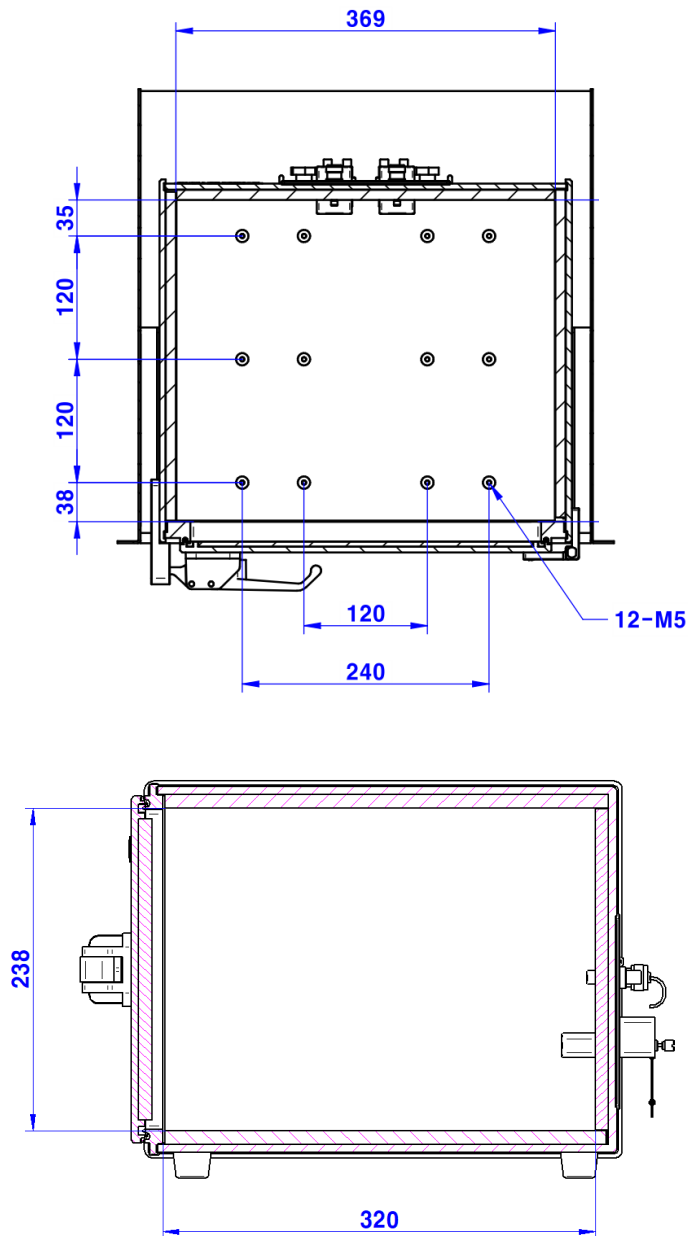
RF Specifications

*The shielding effectiveness is measured with blank panels mounted; other I/O interface panel may result in different shielding effectiveness.

Frequency Range	0.1 GHz to 12 GHz
*Shielding Effectiveness	
0.1 GHz to 3 GHz	> 70 dB (meas.)
3 GHz to 6 GHz	> 60 dB (meas.)
6 GHz to 12 GHz	> 60 dB (meas.)

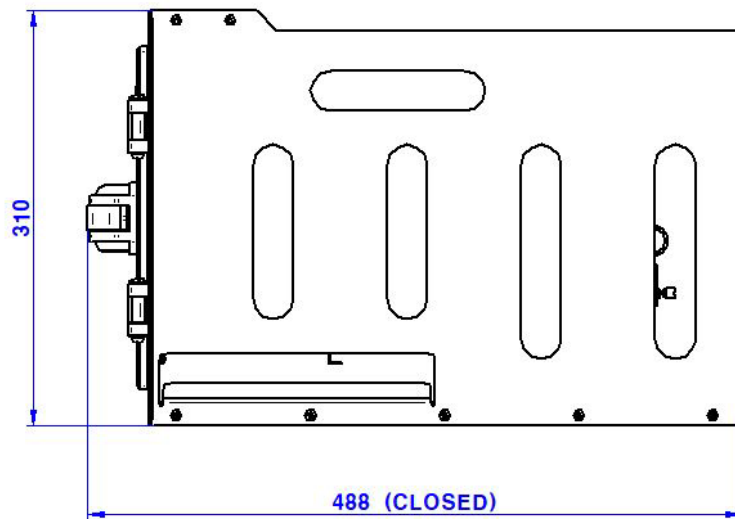
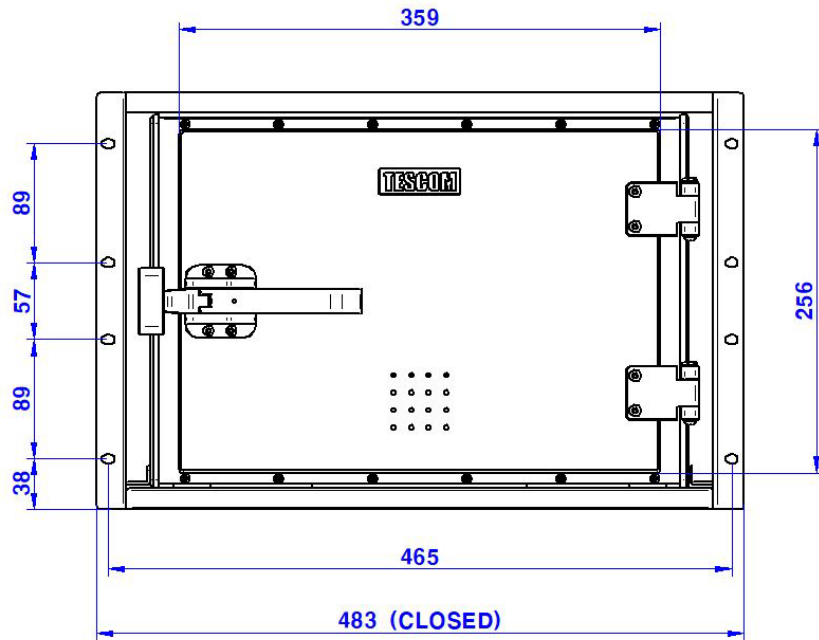
Inner Dimensions

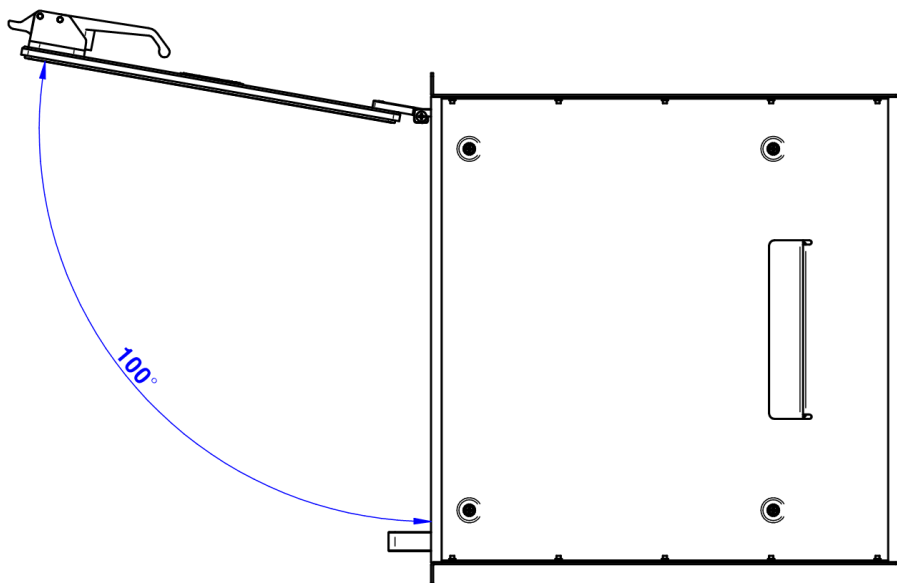
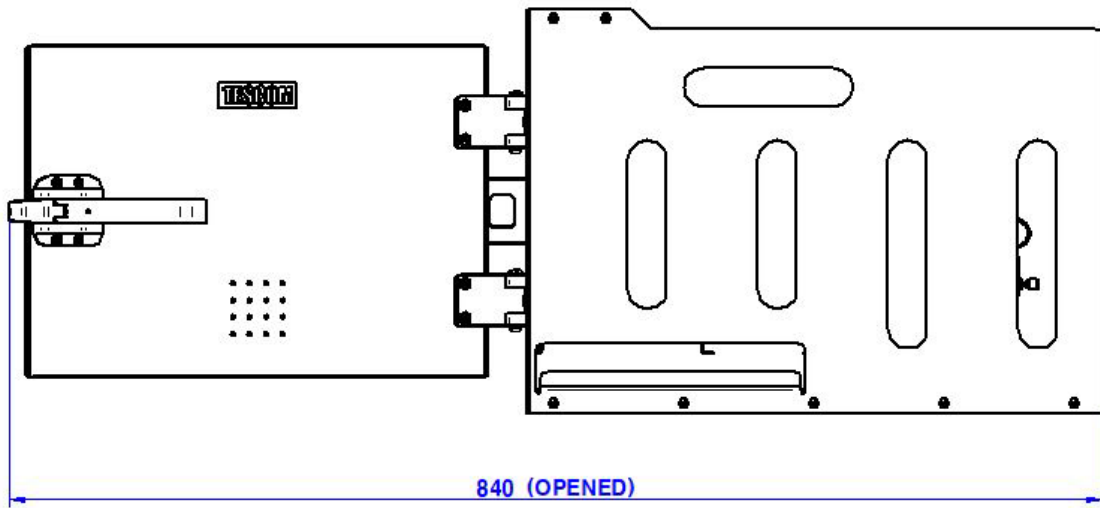
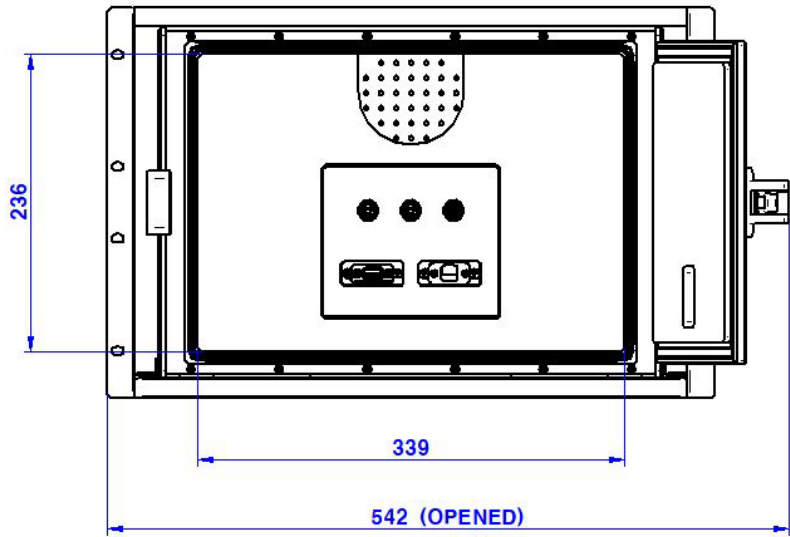
TC-5932AU Inner Dimensions: 369 (W) x 320 (D) x 238 (H) mm



Outer Dimensions

TC-5932AU Outer Dimensions: 483 (W) x 488 (D) x 310 (H)





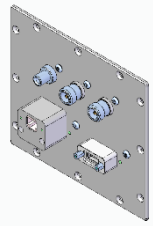
Ordering Information


Order Number	Product
TC-5932AU	Shield Box (including accessories below) Test Report SS-402, N(m)to N(m)cable, 1m, 1pc
TC-5932AU Rack Mount Set	Shield Box (including accessories below) Test Report SS-402, N(m)to N(m)cable, 1m, 1pc TC-5932AU [1EA]+ 19" Rack Mount Set



TC-5932AU Rack Mount Set' Rack Mounted



I/O Interface Panels

Product	Code	Configuration
 <p>Data Interface Panel</p>	M02020A	One (1), DC Power Jack Adaptor One (1), RJ-45 Outside and Inside Two (2), N(f) Outside and SMA(f) Inside One (1), USB 2.0 Outside and Inside

 <p>Cooling Fan</p>	C5930A-2032A	One (1), Fan DC 24V (Exhaust)
--	--------------	-------------------------------

Custom RF Connector Panel

Custom RF Connector Panel is available by selecting or combining the below RF Connectors

RF Connector	Description / Order Number	Frequency Range / Impedance / V.S.W.R
	RF, N-SMA BH Connector 3408-0100	From DC to 18 GHz / 50 Ω / 1.3 max
	RF, SMA-SMA BH Connector 3408-0101	From DC to 18 GHz / 50 Ω / 1.3 max

Custom I/O Interface Panel

Custom I/O Interface Panel is available by selecting below I/O Interfaces and combine.

Please contact TESCOM Sales Team or your local distributor.

I/O Filters	Code	Description	*Typical Shielding
	3409-0009-1 DB25, 1000pF pi Filter	3 Mbps / 100 VDC 5 Amps max	>70 dB from 0.5 to 2 GHz >80 dB from 2 to 3 GHz >70 dB from 3 to 6 GHz
	3409-0014-1 DB25, 100pF pi Filter	10 Mbps / 100 VDC 5 Amps max	>50 dB from 0.5 to 2 GHz >60 dB from 2 to 3 GHz >60 dB from 3 to 6 GHz
	3409-0008-1 DB9, 1000pF pi Filter	3 Mbps / 100 VDC 5 Amps max	>70 dB from 0.5 to 2 GHz >80 dB from 2 to 3 GHz >70 dB from 3 to 6 GHz
	3409-0010-1 DB9, 100pF pi Filter	10 Mbps / 100 VDC 5 Amps max	>50 dB from 0.5 to 2 GHz >60 dB from 2 to 3 GHz >60 dB from 3 to 6 GHz
	3409-0018A-3^(a) USB 2.0 Filter	480 Mbps / 5 V, 500 mA Max Current: 5 A	>60 dB from 0.5 to 2 GHz >70 dB from 2 to 3 GHz >70 dB from 3 to 6 GHz >70 dB from 6 to 12 GHz
	3409-0042A-2^(a) USB 3.2 Gen 1, Type A Filter (Active)	5000 Mbps / 5 V, 600 mA Max Current: 1.5 A	>80 dB from 0.5 to 2 GHz >80 dB from 2 to 3 GHz >75 dB from 3 to 6 GHz >55 dB from 6 to 12 GHz
	3409-0046A USB 3.2 Gen 2, Type C Filter (Active)	10 Gbps / 4 - 22V Max Current: 5 A	>70 dB from 0.5 to 2 GHz >70 dB from 2 to 3 GHz >70 dB from 3 to 6 GHz >70 dB from 6 to 12 GHz
	3904-0296A RJ-45 Filter	1 Gbit/s Copper-Line Ethernet (1000 BASE-T)	>60 dB from 0.5 to 2 GHz >70 dB from 2 to 3 GHz >70 dB from 3 to 6 GHz >60 dB from 6 to 12 GHz
	3406-0004A DC Power Adaptor	50 VDC 3 Amps max	>70 dB from 0.5 to 2 GHz >80 dB from 2 to 3 GHz >80 dB from 3 to 6 GHz >70 dB from 6 to 12 GHz
	3406-0005A (Black) 3406-0006A (White) DC Power Adaptor (Banana Jack Type)	50 VDC 10 Amps max	>70 dB from 0.5 to 2 GHz >80 dB from 2 to 3 GHz >80 dB from 3 to 6 GHz >70 dB from 6 to 12 GHz
	3103-0009A AC Power Adaptor	250 VAC 7 Amps max	>70 dB from 0.5 to 2 GHz >80 dB from 2 to 3 GHz >80 dB from 3 to 6 GHz >70 dB from 6 to 12 GHz

(a) Exclusive cables should be used. (USB Cable, 4008-0079A, 2M, USB 3.0A (M) – USB 3.0A (M), Housing: Aluminum

*Typical Shielding is an estimated value with I/O interface applied.

The data above were measured by TESCO standards, and they may differently depend on the measuring method and environment. Each shielding effectiveness is measured without any cable, so it will be likely affected when a cable is connected. Also, it may vary depending on the type of cable.

SPECIFICATIONS SUBJECT TO CHANGE WITHOUT PRIOR NOTICE

